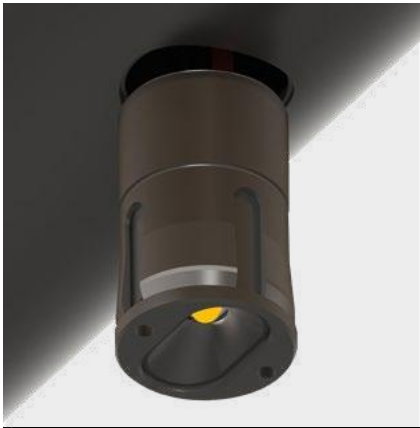


LED PUCK INDUSTRIE LICHT

SPECIFICATION SHEET

SNAP SOLO STANDARD BEAM

SNAP FEATURES A PATENTED DESIGN WITH A COLLAPSIBLE THREAD. WITH ONE EASY PUSH, THE MODULE SNAPS SECURELY INTO THE RAIL. REMOVAL IS ONLY POSSIBLE WITH A UNIQUE EXTRACTION TOOL. SNAP SOLO FEATURES AN INTEGRATED HEAT SINK FOR INSTALLATION IN A RANGE OF ALTERNATE HANDRAIL MATERIALS SUCH AS TIMBER.



SOL-ST-C-NW	SNAP SOLO ST CURVED FACADE NEUTRAL WHITE POLYCARBONATE
SOL-ST-CF-WW	SNAP SOLO ST CURVED FACADE WARM WHITE POLYCARBONATE
SOL-ST-C-NW-B	SNAP SOLO ST CURVED FACADE NEUTRAL WHITE BOROSILICATE
SOL-ST-CF-WW-B	SNAP SOLO ST CURVED FACADE WARM WHITE BOROSILICATE
SOL-ST-FF-NW	SNAP SOLO ST FLAT FACADE NEUTRAL WHITE POLYCARBONATE
SOL-ST-FF-WW	SNAP SOLO ST FLAT FACADE WARM WHITE POLYCARBONATE
SOL-ST-FF-NW-B	SNAP SOLO ST FLAT FACADE NEUTRAL WHITE BOROSILICATE
SOL-ST-FF-WW-B	SNAP SOLO ST FLAT FACADE WARM WHITE BOROSILICATE

TECHNICAL

1.4W / 500mA / 2.8Vf
3000.K - 169lm / 4000.K - 180lm
Ra80+ / 3 STEP MACADAM ELLIPSE

OPTICS

LENS PC - IP65 IK10
BOROSILICATE - IP67

PROTECTION CLASS

IK10
IP65

MATERIAL

316 STAINLESS STEEL

AMBIENT OPERATING CONDITIONS

MIN. -40. / MAX. 55...

ELECTRICAL

COOLSPLICE CONNECTOR

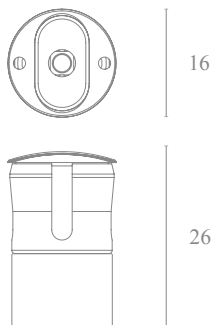
APERTURE

15mm, OR
15mm + (27mm x 1.6mm) COUNTERBORE

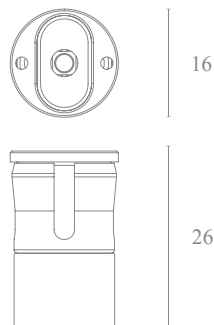
INSTALLATION

MIN. 1.5mm WALL THICKNESS
MIN. 36mm DIAMETER
CURVED OR FLAT MOUNTING SURFACE

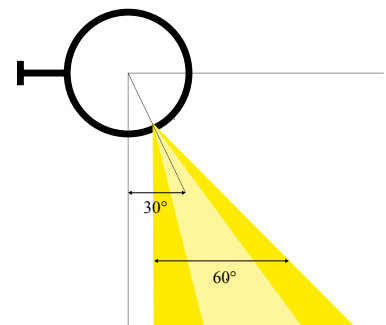
SNAP SOLO ST CF CURVED FACE DETAIL



SNAP SOLO ST FF FLAT FACE DETAIL



SNAP SOLO ST ELLIPTICAL DISTRIBUTION FOR MOUNTING AT 30° FROM VERTICAL.

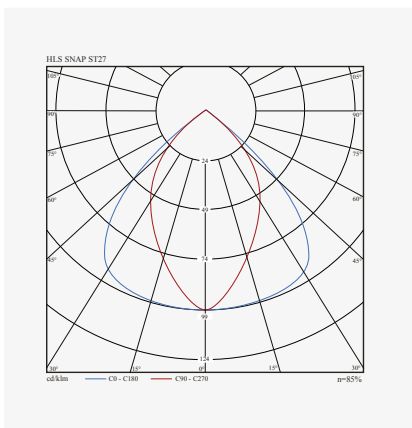


SPECIFICATION SHEET

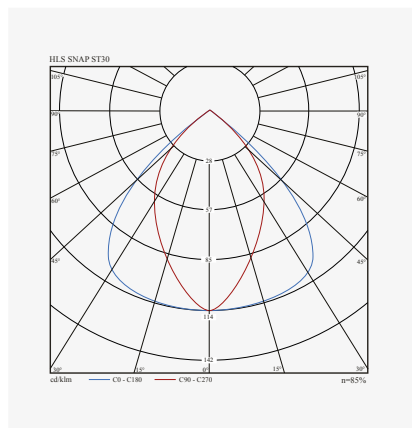
POLAR DIAGRAMS

SNAP SOLO ST IS A STANDARD ELLIPTICAL DISTRIBUTION FOR MOUNTING IN THE UNDERSIDE OF A HANDRAIL AT 30° FROM THE VERTICAL AXIS. SNAP ST IS AVAILABLE IN A RANGE OF STANDARD DISTRIBUTIONS AND SPECIAL ANGLES ON REQUEST.

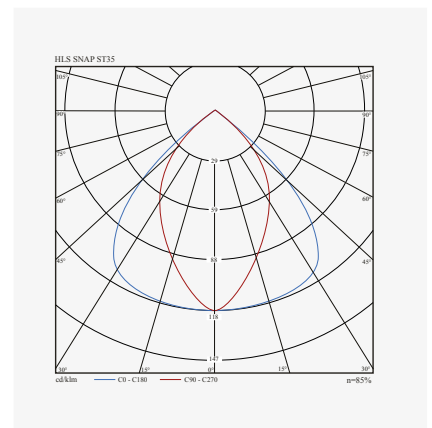
SNAP SOLO ST 27
STANDARD SYMMETRICAL BEAM 2700. K



SNAP SOLO ST 30
STANDARD SYMMETRICAL BEAM 3000. K



SNAP SOLO ST 35
STANDARD SYMMETRICAL BEAM 3500. K



SNAP SOLO ST 40
STANDARD SYMMETRICAL BEAM 4000. K

